

**Government of India**  
**Ministry of Railways**  
**Research, Designs & Standards Organisation**  
**Manak Nagar, Lucknow - 226 011**

No. EL/3.1.3/E7

Date 29 August, 1977

**MODIFICATION SHEET NO. RDSO/WAM4/51**

1. **Title of modification:**

Modified support bracket for DJ control cables.

2. **Application to class of locomotives:**

WAM4 locomotives.

**NOTE:** Applicable in principle, to all electric locomotives at similar locations.

3. **Object of modification:**

On some locomotives, the steel strip bracket support for DJ control cables has fallen off along with the control cables, due to failure of weld caused by vibrations. To avoid such an occurrence, it is proposed to strengthen the cable support bracket with an increased welding surface as shown in drawing No. SKEL-2711.

4. **Modification Drawing No:**

RDSO SKEL-2711.

5. **Agency for Modification:**

Railways: locomotives in service

Chittaranjan Locomotive Works: Locomotives under production.

6. (a) Material required and specification:

(i) Steel strip bracket as per RDSO

Drg. No. SKEL-2711 -one

(ii) Empire or non-hygroscope tap 25 x 25 mm (IS: 3352). approx. -10 meters

(iii) Varnish insulating -q.s.

(b) Material rendered surplus:

Existing steel strip Bracket -one

7. **Work to be carried out:**

If the existing bracket is not welded substantially in accordance with RDSO drawing No. SKEL-2711, it should be removed and new bracket provided with welding all round on the face of the roof angle iron as shown in the drawing. The entire surface length of the support bracket should be covered with hall lap, one layer of 25 mm empire or non-hygroscepic insulating type, and varnished.

8. **Reference:**

9. **Distribution:**

Secretary (Elec Traction), Railway Board, New Delhi.

General Manager (Electrical),

Central Railway, Bombay VT

Eastern Railway, Fairly Place, Calcutta

Northern Railway, baroda House, New Delhi

South Eastern Railway, Garden Reach, Calcutta

Eastern Railway, Churchgate, Bombay

Chittaranjan Locomotive Works, Chittaranjan, W. Bengal

Superintendent Workshop

Eastern Railway, Kancharapara.

Dy. Chief Elec Engineer

Central Railway, POH shop, Bhusaval

Eastern Railway, Kancharapara

Dy chief Elec Engineer (Design)

Chittaranjan Locomotive Works, Chittaranjan

Senior Divisional Elec Engineer (TRS)

Central Railway, Kalyan

Eastern Railway, Asansol/Mughalsarai

Northern Railway, Kanpur

South Eastern Railway, Tatanagar/Bhilai

Divisional Elec Engineer (TRS)

Central Railway, Bhusaval

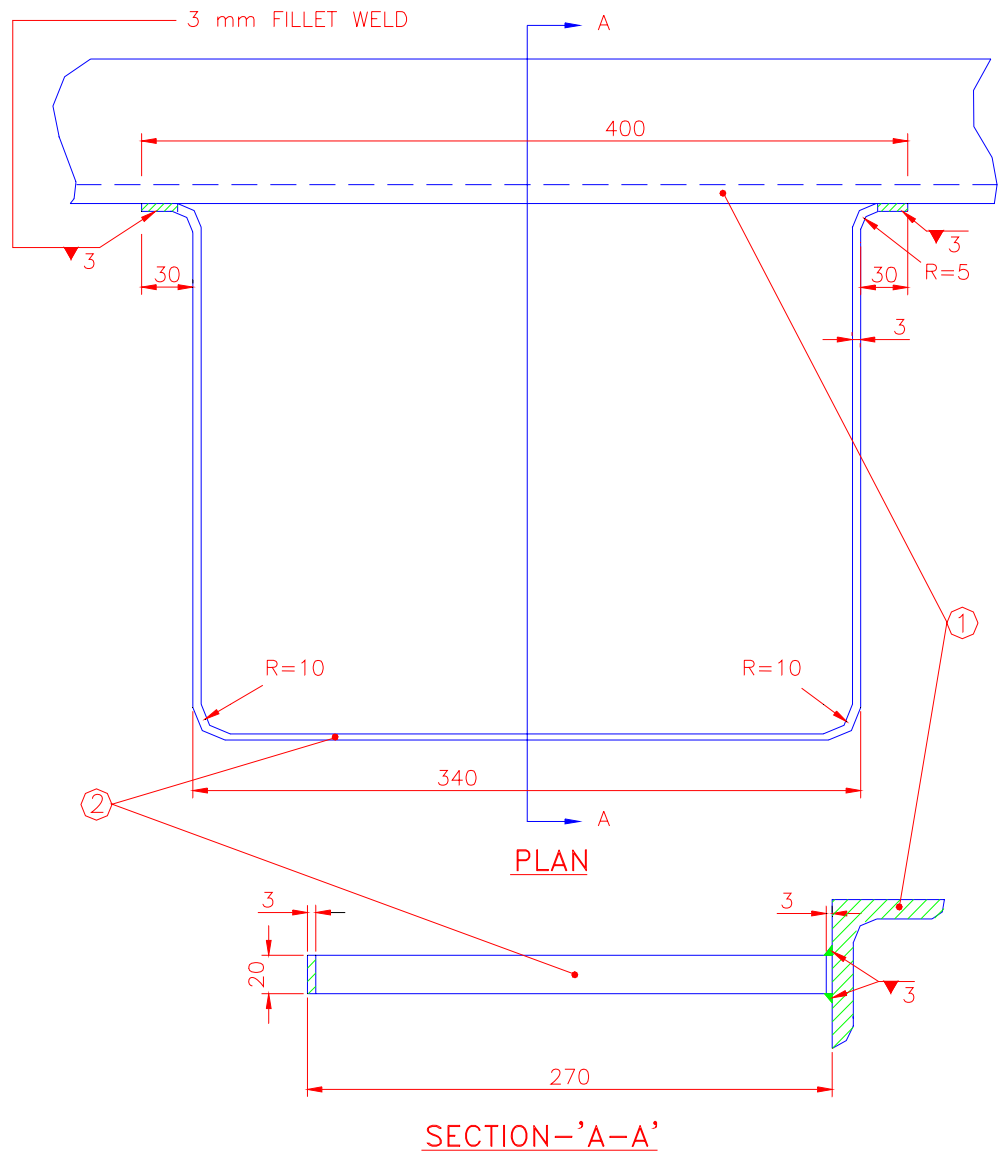
Northern Railway, Ghaziabad

Western Railway, Baroda (Gujarat).

Dy Director Inspection (Elec) /RDSO

C/o Chittaranjan Locomotive Works, Chittaranjan W. Bengal.

(S. Malaviya)  
for Director General/Elec.



NOTE:-

ALL DIMENSIONS ARE IN mm.

2.	M.S. CLAMP M.S. CLAMP	1	STEEL ST.42/8 IS:1079
1.	ROOF ANGLE 75x75x10	EXIS- TING	-
S.N.	DESCRIPTION	QTY LOCO	MAT/SPD

REF:-	SCALE:- 1 : 3	APPROVED BY:-
MODIFIED SUPPORT FOR THE D J CONTROL CABLES (MODIFICATION NO RDSO/WAM4/S1)		
R.D.S.O.	SK.EL-2711	

Dt.	
D	
T	
C	